



COMPASS

Queens Luxury Report

Jun 22 - 28, 2026, Residential Contracts \$1.25M+

Photo: [162-04 12th Road](#)

The Queens luxury real estate market, defined as all properties priced \$1.25M and above, saw 20 contracts signed this week, made up of 6 condos, and 14 houses. The previous week saw 16 deals. For more information or data, please reach out to a Compass agent.

\$1,577,745

Average Asking Price

\$1,424,500

Median Asking Price

\$915

Average PPSF

2%

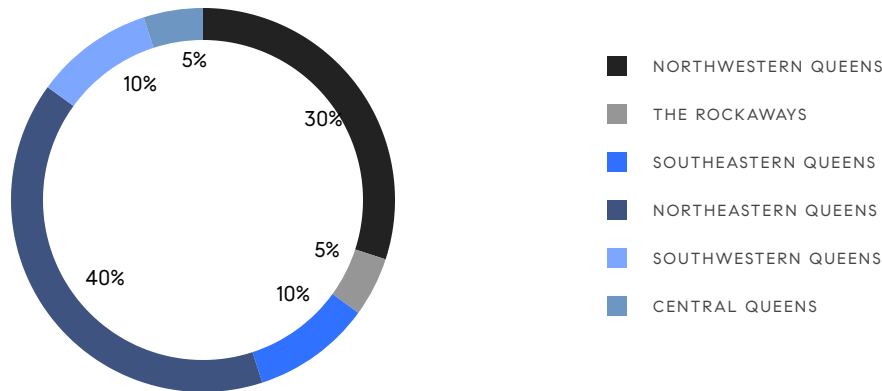
Average Discount

\$31,554,887

Total Volume

108

Average Days On Market



6

Condo Deal(s)

0

Co-op Deal(s)

14

Single-Family Deal(s)

\$1,993,334

Average Asking Price

\$0

Average Asking Price

\$1,399,635

Average Asking Price

\$1,935,000

Median Asking Price

\$0

Median Asking Price

\$1,374,000

Median Asking Price

\$1,466

Average PPSF

\$679

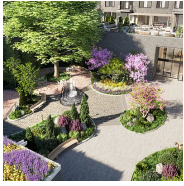
Average PPSF

1,367

Average SqFt

2,149

Average SqFt

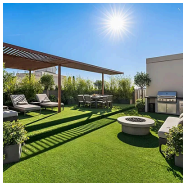


45-30 Pearson Street, Unit PH4C

Long Island City

Contract Signed

Type	Condo	Price	\$2,750,000	Sq. Ft.	1,351	Beds	3
DOM	115	Initial	\$2,750,000	PPSF	\$2,036	Baths	2

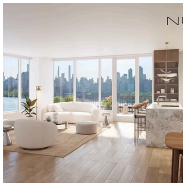


27-28 Thomson Avenue, Unit 804

Long Island City

Contract Signed

Type	Condo	Price	\$2,195,000	Sq. Ft.	1,338	Beds	1
DOM	202	Initial	\$2,295,000	PPSF	\$1,641	Baths	2

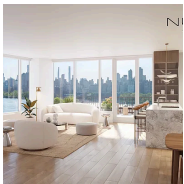


30-55 Vernon Boulevard, Unit PHA

Astoria

Contract Signed

Type	Condo	Price	\$1,995,000	Sq. Ft.	1,587	Beds	3
DOM	113	Initial	\$1,995,000	PPSF	\$1,258	Baths	3

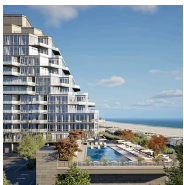


30-55 Vernon Boulevard, Unit PHB

Astoria

Contract Signed

Type	Condo	Price	\$1,875,000	Sq. Ft.	1,521	Beds	3
DOM	93	Initial	\$1,875,000	PPSF	\$1,233	Baths	2



141 Beach 67th Street, Unit 807

Arverne

Contract Signed

Type	Condo	Price	\$1,795,000	Sq. Ft.	1,392	Beds	2
DOM	2	Initial	\$1,795,000	PPSF	\$1,290	Baths	2



86-32 Midland Parkway

Jamaica Estates

Contract Signed

Type	House	Price	\$1,748,000	Sq. Ft.	2,500	Beds	4
DOM	180	Initial	\$1,975,000	PPSF	\$700	Baths	3

Compass is a licensed real estate broker and abides by Equal Housing Opportunity laws. All material presented herein is intended for informational purposes only. Information is compiled from sources deemed reliable but is subject to errors, omissions, changes in price, condition, sale, or withdrawal without notice. No statement is made as to the accuracy of any description. All measurements and square footages are approximate. This is not intended to solicit property already listed. Nothing herein shall be construed as legal, accounting or other professional advice outside the realm of real estate brokerage.



40-32 195th Street

Auburndale

Contract Signed

Type	House	Price	\$1,500,000	Sq. Ft.	2,424	Beds	3
DOM	181	Initial	\$1,500,000	PPSF	\$619	Baths	1

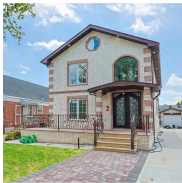


32-29 Parsons Boulevard

Flushing

Contract Signed

Type	House	Price	\$1,488,888	Sq. Ft.	2,900	Beds	3
DOM	42	Initial	\$1,488,888	PPSF	\$514	Baths	3



83-46 248th Street

Bellerose

Contract Signed

Type	House	Price	\$1,455,000	Sq. Ft.	2,250	Beds	4
DOM	31	Initial	\$1,455,000	PPSF	\$647	Baths	4

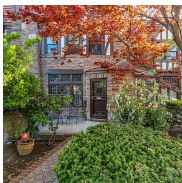


160-51 80th Street

Rockwood Park

Contract Signed

Type	House	Price	\$1,449,999	Sq. Ft.	2,411	Beds	3
DOM	120	Initial	\$1,499,000	PPSF	\$602	Baths	3



67-52 Ingram Street

Forest Hills

Contract Signed

Type	House	Price	\$1,399,000	Sq. Ft.	1,780	Beds	3
DOM	57	Initial	\$1,399,000	PPSF	\$786	Baths	2



73-36 196th Street

Fresh Meadows

Contract Signed

Type	House	Price	\$1,398,000	Sq. Ft.	1,700	Beds	4
DOM	66	Initial	\$1,398,000	PPSF	\$823	Baths	1

Compass is a licensed real estate broker and abides by Equal Housing Opportunity laws. All material presented herein is intended for informational purposes only. Information is compiled from sources deemed reliable but is subject to errors, omissions, changes in price, condition, sale, or withdrawal without notice. No statement is made as to the accuracy of any description. All measurements and square footages are approximate. This is not intended to solicit property already listed. Nothing herein shall be construed as legal, accounting or other professional advice outside the realm of real estate brokerage.

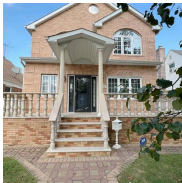


5-45 48th Avenue, Unit 3C

Long Island City

Contract Signed

Type	Condo	Price	\$1,350,000	Sq. Ft.	1,009	Beds	2
DOM	41	Initial	\$1,350,000	PPSF	\$1,338	Baths	2



83-49 250th Street

Bellerose

Contract Signed

Type	House	Price	\$1,350,000	Sq. Ft.	2,000	Beds	4
DOM	14	Initial	\$1,350,000	PPSF	\$675	Baths	2

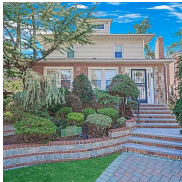


29-06 161st Street

Flushing

Contract Signed

Type	House	Price	\$1,350,000	Sq. Ft.	1,584	Beds	4
DOM	19	Initial	\$1,350,000	PPSF	\$853	Baths	3

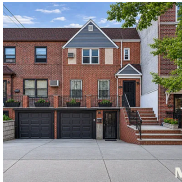


186-34 Henley Road

Jamaica Estates

Contract Signed

Type	House	Price	\$1,300,000	Sq. Ft.	1,888	Beds	3
DOM	247	Initial	\$1,598,000	PPSF	\$689	Baths	2.5



25-75 43rd Street

Astoria

Contract Signed

Type	House	Price	\$1,299,000	Sq. Ft.	1,560	Beds	3
DOM	15	Initial	\$1,299,000	PPSF	\$833	Baths	2



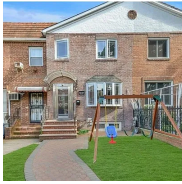
88-12 157th Avenue

Rockwood Park

Contract Signed

Type	House	Price	\$1,289,000	Sq. Ft.	3,104	Beds	3
DOM	512	Initial	\$1,375,000	PPSF	\$416	Baths	3

Compass is a licensed real estate broker and abides by Equal Housing Opportunity laws. All material presented herein is intended for informational purposes only. Information is compiled from sources deemed reliable but is subject to errors, omissions, changes in price, condition, sale, or withdrawal without notice. No statement is made as to the accuracy of any description. All measurements and square footages are approximate. This is not intended to solicit property already listed. Nothing herein shall be construed as legal, accounting or other professional advice outside the realm of real estate brokerage.



144-44 73rd Avenue

Kew Gardens Hills

Contract Signed

Type	House	Price	\$1,288,000	Sq. Ft.	1,620	Beds	3
DOM	61	Initial	\$1,299,000	PPSF	\$796	Baths	3.5



71-11 169th Street

Hillcrest

Contract Signed

Type	House	Price	\$1,280,000	Sq. Ft.	2,362	Beds	3
DOM	30	Initial	\$1,280,000	PPSF	\$542	Baths	2

Compass is a licensed real estate broker and abides by Equal Housing Opportunity laws. All material presented herein is intended for informational purposes only. Information is compiled from sources deemed reliable but is subject to errors, omissions, changes in price, condition, sale, or withdrawal without notice. No statement is made as to the accuracy of any description. All measurements and square footages are approximate. This is not intended to solicit property already listed. Nothing herein shall be construed as legal, accounting or other professional advice outside the realm of real estate brokerage.